

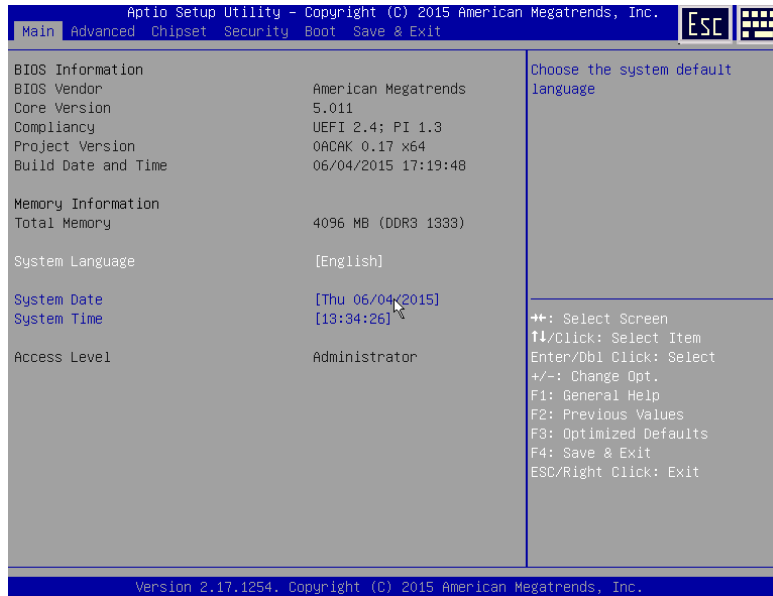
## Merges Legacy BIOS Look-and-Feel with Advanced UEFI Features

AMI's Aptio® Text Setup Environment (TSE) is a firmware user interface designed to work in conjunction with Aptio 4.x and Aptio V Unified EFI (UEFI) solutions. TSE merges the legacy BIOS setup support, already well recognized by BIOS users, with the advanced capability offered by UEFI, integrating them into a familiar user interface. TSE requires minimal flash size depending on selected features.

TSE, a drop-in eModule for Aptio, is made up of a driver and images, which can be customized to an OEM's look and feel or used with AMI's default interface.

TSE functionality includes:

- Splash logo
- POST screen display
- Setup configuration pages
- Boot process support
- Firmware user interface



The firmware is designed to be compatible with the UEFI 2.0 through 2.4 specifications and to present the same look and feel of a legacy BIOS setup. TSE supports IA32, x64 and ARM systems.

TSE is modular, providing the capability to enable or disable specific functionality at build time. In this way, only the features needed for the platform are included into the firmware image.

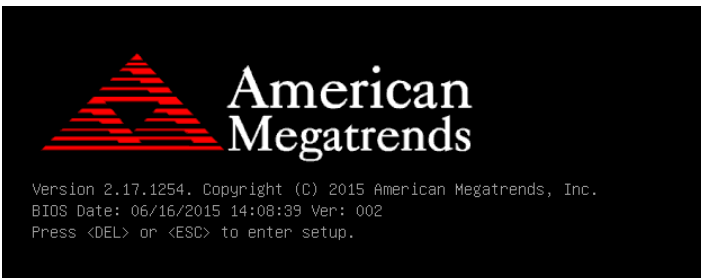
## HIGHLIGHTS:

- UEFI 2.5 compliant
- Aptio module (both 4 and V)
- IA32, x64 and ARM support
- On-the-fly language switching (UNICODE)
- Enable / Disable boot option
- Configurable OEM Hot Key
- Complete remote console support (using standard EFI console)
- Legacy EZ-PORT or Alternate setup look and feel
- Boot to EFI shell from removable media (floppy, USB key, etc)
- OEM splash logo support (Quiet boot)
- Seamless Boot (BGRT) Support
- POST message with boot option display and selection
- Boot maintenance options
- Save and restore user configuration
- Error manager browser
- Logo display early in boot sequence
- Optimal and failsafe default configuration
- Three configuration levels
- Binary component with basic configuration
- Source component
- Post-build configuration with AMIBCP
- Mouse support
- Soft keyboard support
- POST UI interfaces
- Secure Boot Compliance
- OSIndications and ESRT support
- Isolation of OffBoard card Setup Pages support
- HII Browser
- UEFI Shell Application
- EDKII compatibility

Creating multiple *skins* for TSE requires only a minimal amount of porting. TSE is provided with three different skins: EZ-Port, EZ-Port Plus and Alternate Legacy Setup, the two traditional setup skins of AMIBIOS8. The EZ-Port skin also has a configurable screen size, introducing a setup page that supports full screen mode (100x31). OEM specific skins can be easily added, and an AMI TSE Look and Feel Porting Guide is provided. TSE is completely compatible with console redirection. Full screen mode requires a terminal console driver that supports multiple display sizes.

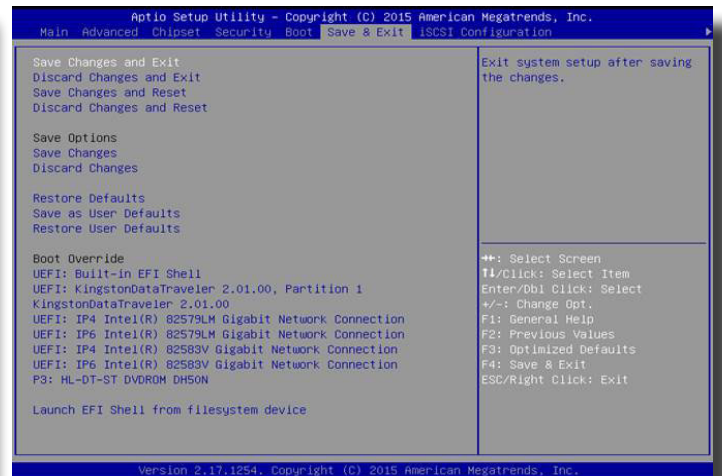
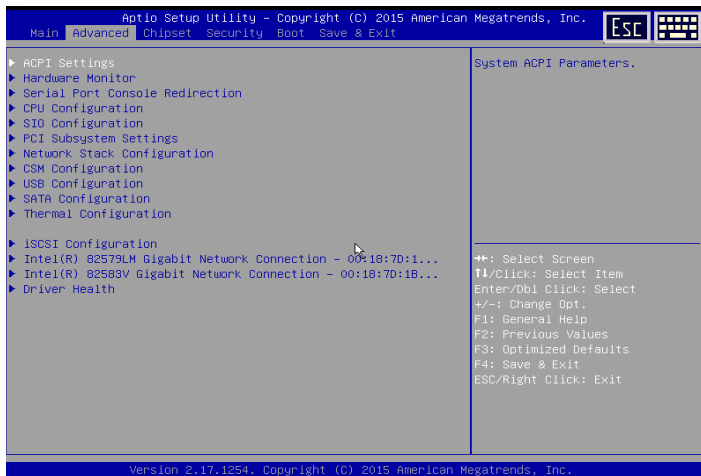
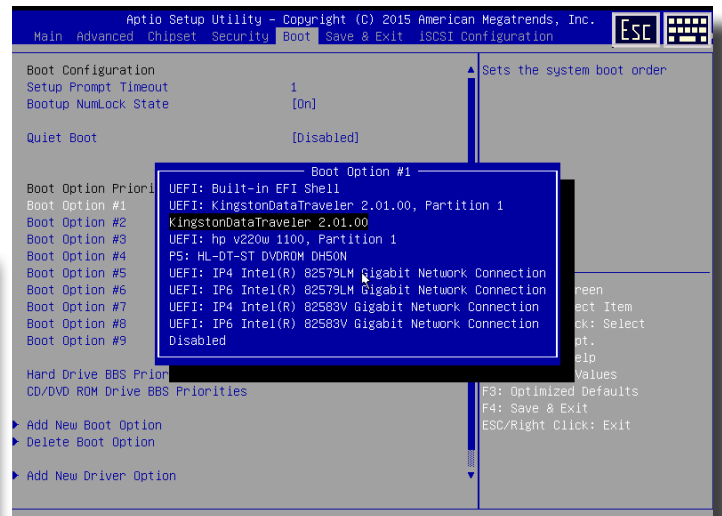
TSE supports five graphical formats for the splash logo: BMP, JPEG, PCX, GIF and PNG.

Besides traditional BIOS functionality, TSE provides the ability to directly launch UEFI applications, like the EFI Shell. Pre-boot management is much more flexible in an UEFI-based system than in traditional legacy BIOS environment. These new capabilities offered by UEFI are completely supported by TSE.



TSE offers three levels of configuration and customization:

- Binary component with basic configuration
  - SDL customization - to customize the generically offered UI and functionality behaviors
  - Hook customization - to override or do more than default functionality behaviors using project/customer code
- Build time configuration (changes of the source files)
  - Look and feel customization - to customize the default look and feel offered by TSE
- Post-build configuration, allowing to customize the firmware image.
  - AMIBCP without the need to rebuild the firmware



American Megatrends Inc. | [ami.com](http://ami.com)  
5555 Oakbrook Parkway, Bldg. 200  
Norcross, GA 30093 | 770.246.8600



For more information: <http://ami.com/>

Statement of Liability: © 2016 American Megatrends Inc. Product specifications are subject to change without notice. Products mentioned may be trademarks or registered trademarks of their respective companies. All rights reserved. No warranties are made, either expressed or implied, with regard to the contents of this work, its merchantability or fitness for a particular use. This publication contains proprietary information, which is protected by copyright. American Megatrends reserves the right to update, change and/or modify this product at anytime.