



**AMI VR-pulse™
(Generic Version)
User's Guide**

© Copyright 1985-2011 American Megatrends, Inc.
All rights reserved.
American Megatrends, Inc.
5555 Oakbrook Parkway,
Building 200
Norcross, GA 30093

This publication contains proprietary information that is protected by copyright. No part of this publication can be reproduced, transcribed, stored in a retrieval system, translated into any language or computer language, or transmitted in any form whatsoever without the prior written consent of the publisher, American Megatrends, Inc.

All trademarks and trade names used in this document refer to either the entities claiming the marks and names or their products. American Megatrends, Inc. disclaims any proprietary interest in trademarks and trade names other than its own.

Revision History

03/31/2011 Preproduction Release

NOTE:

All screen captures are for representative purposes only. Your actual screen may look different. You may have a custom build of AMI VR-pulse™. However, the basic usage remains the same.

Table of Contents

Revision History	ii
Table of Contents.....	iii
Limited Warranty.....	iv
Web Site	iv
Disclaimer	v
Chapter 1 AMI VR-pulse Overall Usage	1
Application Bar.....	1
Network Status.....	3
Control Panel	4
Language: Language and Keyboard layout Settings	5
Network: Network Connections	6
System: Date/Time Settings.....	8
System: Sound Preferences.....	9
System: Restore Defaults.....	10
System: Application Manager.....	11
System: Power Management	12
System: Preferred OS	13
Index	15

Limited Warranty

The buyer agrees that if this product proves to be defective, American Megatrends is only obligated to repair or replace this product at American Megatrends' discretion according to the terms and conditions of the warranty registration card that accompanies this product. American Megatrends shall not be liable in tort or contract for any loss or damage, direct, incidental or consequential resulting from the use of this product. Please see the *Warranty Registration Card* shipped with this product for full warranty details.

Technical Support

AMI provides technical support for AMI products purchased directly from AMI or from an AMI-authorized reseller only.

If...	Then...
You purchased this product from AMI or from a certified AMI reseller,	Call AMI technical support at 770-246-8645. Please be prepared to specify the serial number of the product.
This AMI product was installed as part of a system manufactured by a company other than AMI or you purchased an AMI product from an unauthorized reseller,	Call the technical support department of the computer manufacturer or the unauthorized reseller. AMI does not provide direct technical support in this case.

Web Site

We invite you to visit the American Megatrends website at:

<http://www.ami.com/>

Disclaimer

This manual describes the basic operations of the generic version of the American Megatrends AMI VR-pulse™. Although efforts have been made to assure the accuracy of the information contained here, American Megatrends expressly disclaims liability for any error in this information, and for damages, whether direct, indirect, special, exemplary, consequential or otherwise, that may result from such error, including but not limited to the loss of profits resulting from the use or misuse of the manual or information contained therein (even if American Megatrends has been advised of the possibility of such damages). Any questions or comments regarding this document or its contents should be addressed to American Megatrends at the address shown on the inside of the front cover.

American Megatrends provides this publication “as is” without warranty of any kind, either expressed or implied, including, but not limited to, the implied warranties of merchantability or fitness for a specific purpose.

Some states do not allow disclaimer of express or implied warranties or the limitation or exclusion of liability for indirect, special, exemplary, incidental or consequential damages in certain transactions; therefore, this statement may not apply to you. Also, you may have other rights that vary from jurisdiction to jurisdiction.

This publication could include technical inaccuracies or typographical errors. Changes are periodically made to the information herein; these changes will be incorporated in new editions of the publication. American Megatrends may make improvements and/or revisions in the product(s) and/or the program(s) described in this publication at any time.

Requests for technical information about American Megatrends products should be made to your American Megatrends authorized reseller or marketing representative.

NOTE:

All screen captures are for representative purposes only. Your actual screen may look different. You may have a custom build of AMI VR-pulse™. However, the basic usage remains the same.

Chapter 1 AMI VR-pulse Overall Usage



NOTE:

All screen captures are for representative purposes only. Your actual screen may look different. You may have a custom build of AMI VR-pulse™. However, the basic usage remains the same.









To enter into AMI VR-pulse, simply power on your system and press the appropriate key during initial boot up or BIOS setup option as specified in computer user manual.





Application Bar

The Application Bar is the row of icons that run the length of the bottom of the screen during your AMI VR-pulse session.

NOTE:

Many of the applications listed are open source or belong to specific companies. Their usage is not described in this guide.

Application Name	Icon	Description
Mozilla Thunderbird www.mozillamessaging.com		<p>Mozilla Thunderbird is a free, open source, cross-platform e-mail and news client developed by the Mozilla Foundation. The project strategy is modeled after Mozilla Firefox, a project aimed at creating a web browser.</p> <p>For more information on how to use the Mozilla Thunderbird email and news client, please visit the Mozilla website at the following URL: www.mozillamessaging.com</p>
Chromium Browser www.chromium.org/Home		<p>Internet browser provided by Chromium open source project and other open source software.</p> <p>You are provided an option to download and install the Google Chrome Browser to enable Adobe Flash Player and in-frame PDF support.</p> <p>For more information on how to use the Google Chrome browser, please visit the Google website at the following URL: www.chromium.org/Home</p>
VLC Player www.videolan.org/vlc		<p>VLC Player is an open source cross-platform multimedia player and framework that plays most multimedia files as well as DVD, Audio CD, VCD and various streaming protocols.</p> <p>Depending on your computer manufacturer, VLC player may not be pre-installed on your computer. You may be prompted to download and install.</p> <p>For more information on how to use the VLC Player multimedia player, please visit the VideoLan.org website at the following URL: www.videolan.org/vlc</p>
Nautilus live.gnome.org/Nautilus		<p>Nautilus is an open source file manager.</p> <p>For more information on how to use Nautilus, please visit the Gnome.org website at the following URL: live.gnome.org/Nautilus</p>
Skype www.skype.com		<p>Skype is a software application that allows you to make voice calls and chat via the Internet. Calls to other users within the Skype service are free. Calls to regular telephones and cellular phones can be made for a fee using a debit-based user account system.</p> <p>For more information about Skype, please visit the Skype website at the following URL: www.skype.com</p>
Pidgin www.pidgin.im		<p>Pidgin is a chat program that allows you to login to multiple chat networks simultaneously.</p> <p>For more information on how to use the Pidgin instant messenger program, please visit the Pidgin.im website at the following URL: www.pidgin.im</p>
Facebook www.facebook.com		<p>Facebook is a social network service and website.</p> <p>For more information about Facebook, please visit the Facebook website at the following URL: www.facebook.com</p>
Twitter www.twitter.com		<p>Twitter is a social networking and microblogging service that allows you to send and read messages called tweets.</p> <p>For more information about Twitter, please visit the Twitter</p>

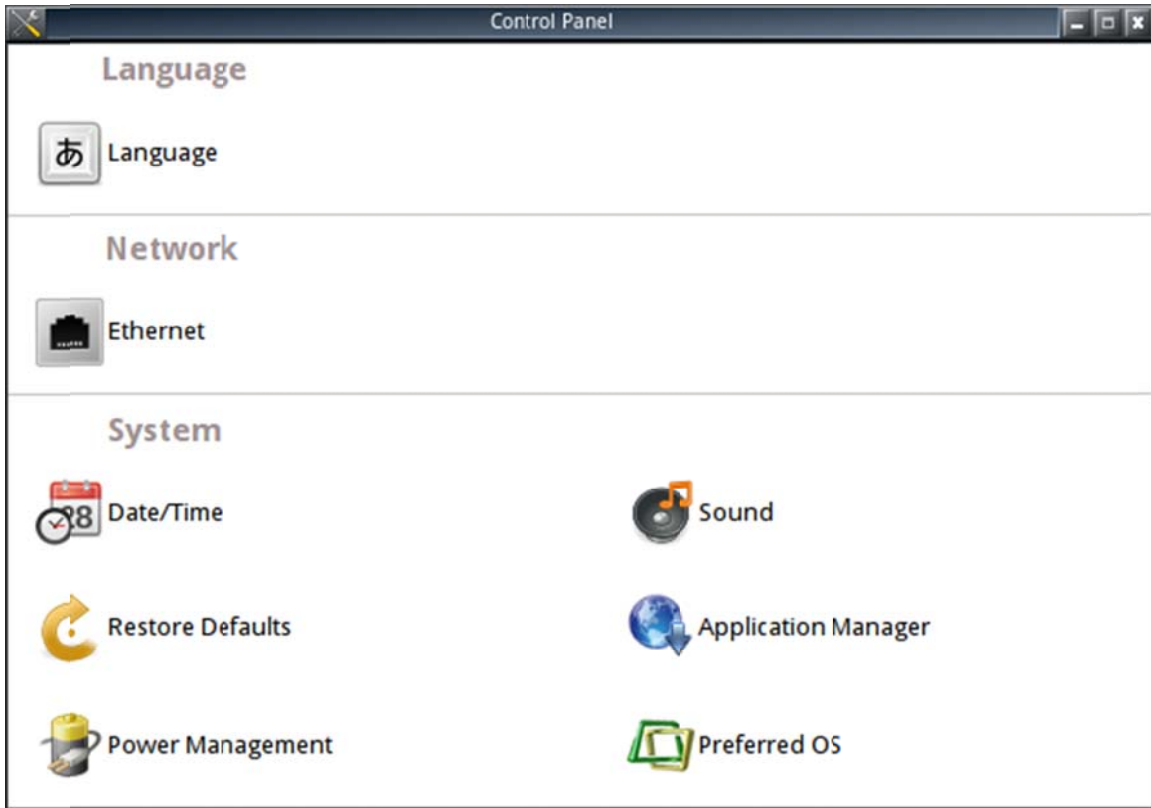
Application Name	Icon	Description
		website at the following URL: www.twitter.com
Control panel		Control Panel allows you to configure basic parameters for your AMI VR-pulse session. You can configure the language settings using Control Panel as well as the network settings, sound settings, date, time and boot settings. For more information on how to use each of these features, please see the next section of this guide.
Date/Time		The Date/Time settings page allows you to adjust the date and time of your system. The Date/Time settings page is very intuitive and easy to use. For more information on how to use the Date/Time settings page, please see the Control Panel section of this guide.
Battery Status		The Battery Status application allows you to visually see the approximate status of the current battery life. You can also open the Battery Status application and view the approximate time left before the battery is fully discharged.
Shutdown		The Shutdown application allows you to shutdown, reboot or boot to the installed operating system, such as the Microsoft Windows 7 operating system.

Network Status



The Network Status icon is located on the upper left corner of the screen. You can click on it to view any available wireless networks in range and connect to it. You can also connect to hidden wireless networks. Wired network status is also shown in this menu. It provides option to connect/disconnect wired and wireless network.

Control Panel



Language: Language and Keyboard layout Settings

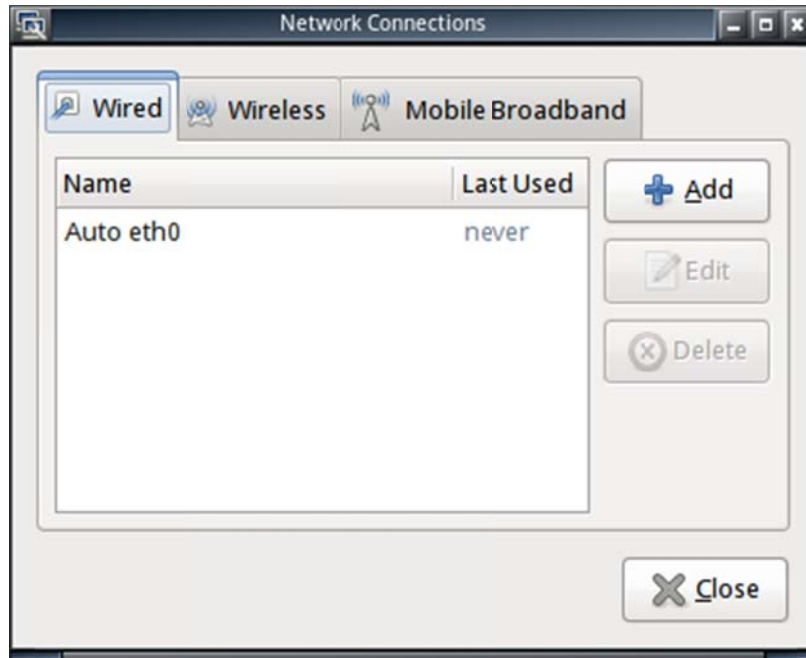


Language Settings allows you to configure the default language settings of your AMI VR-pulse session. To set a language, simply scroll to the language that you want to use and highlight it. Then simply select the OK button and then close the Language Settings dialog box.

Keyboard layout is also changed based on the language selected. For languages supporting multiple keyboard layouts, the keyboard layout is included in parentheses.

One really neat feature of the language settings feature is that it configures many of the other applications to default to your selected language. Because of this, you will notice that your Internet browser will be configured to be viewable in the language that you have selected.

Network: Network Connections

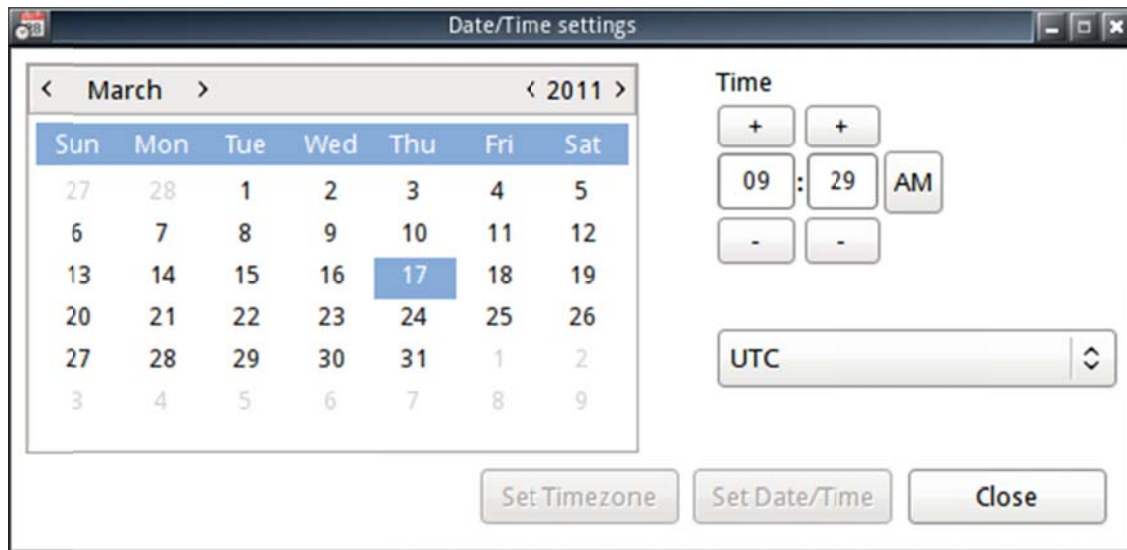


Network Connections allows you to configure the Ethernet settings of your system so that you can use your system to connect to the Internet during the AMI VR-pulse session. The Network settings are very intuitive and easy to configure.

Type	Description
Wired	<p>Use the Wired tab to configure the Ethernet port on your system. The port will automatically be configured to connect to a DHCP network. However, you can configure the port to use a static IP address. You can configure the Subnet and Gateway information as well.</p> <p>If you want to use a link-local address, you can also configure that here too. A link-local address is an IP address that is intended only for communications within the segment of a local network (a link) or a point-to-point connection that a host is connected to. Link-local addresses allow addressing hosts without using a globally-routable address prefix that must be obtained from a local or regional Internet registry.</p>
Wireless	<p>Use the Wireless tab to edit an already configured Wifi connection setting. Connecting to a new Wireless network is done using the Network Status icon. You can edit or delete a configured connection from this tab.</p> <p>Remember to apply your settings by clicking Apply (before you click Close).</p>

Type	Description
Mobile Broadband	<p data-bbox="513 262 1370 365">If your system has a mobile broadband card or port, you will find this feature very useful. You can configure your mobile connection into AMI VR-pulse so that you do not have to fully boot into your operating system and check your emails while on the road. This helps reduce excess battery drain on your system.</p> <p data-bbox="513 396 1328 499">In order to configure your mobile broadband card onto your system, you will need to install your mobile broadband card and select it from the list of mobile broadband devices during the wizard installation. You will be asked for your country, provider, phone number, username and password.</p> <p data-bbox="513 531 1370 634">You may be required to further configure the authentication settings such as the compression and other authentication methods, such as EAP, PAP, CHAP, MSCHAP and so on. In most cases, your provider's PPP server will support all authentication methods. However, if the connection fails, try disabling support for some of the methods.</p>

System: Date/Time Settings



The Date/Time settings page allows you to adjust the date and time of your system. The Date/Time settings page is very intuitive and easy to use.

To configure the date, simply use the calendar. The arrows allow to scroll through the months and years separately.

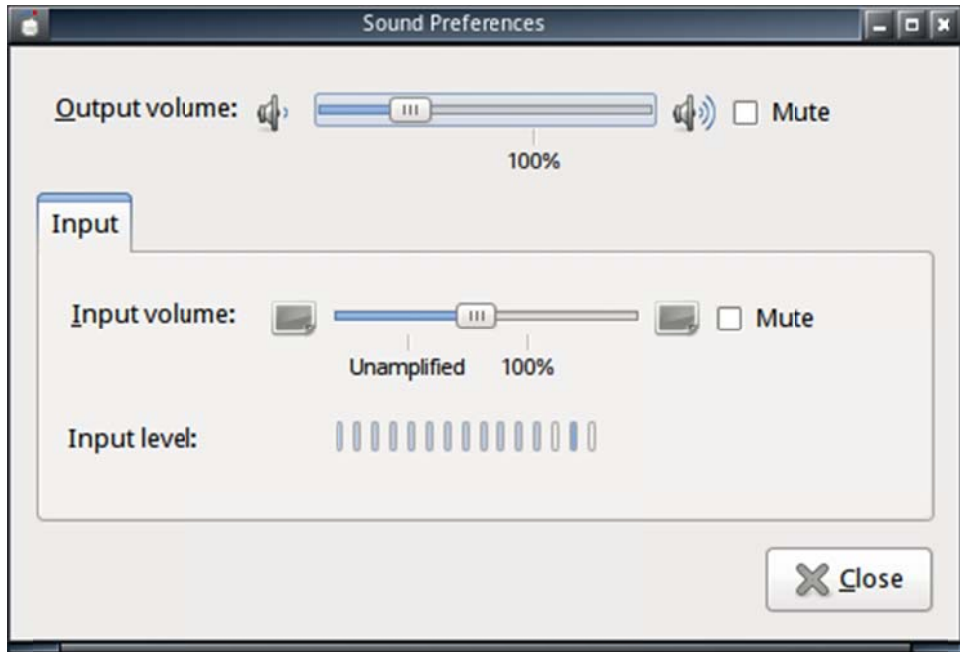
To configure the time, simply use the plus and minus buttons to toggle through the hours and minutes. Use the AM/PM toggle button to switch between night and day.

Once you are satisfied with you date or time adjustments, save your settings by clicking the Set Date/Time button.

You can also select your time zone. By default it is set to UTC or Coordinated Universal Time, which is the time standard by which the world regulates clocks and time. Computer servers, online services and other entities that rely on having a universally accepted time use UTC for that purpose.

Once you are satisfied with you adjustment, save your settings by clicking the Set Timezone button.

System: Sound Preferences

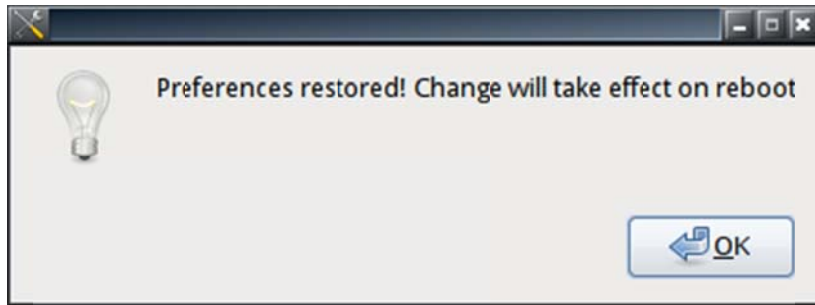


The Sound Preferences dialog box allows you to adjust the volume and input microphone levels. You can also mute the sound or microphone. This is a very handy feature to have open during Internet calls and while watching videos during your AMI VR-pulse session.

System: Restore Defaults



If you ever find that you have gone too far with your customizations and want to start over, you can simply click the Restore Defaults icon.



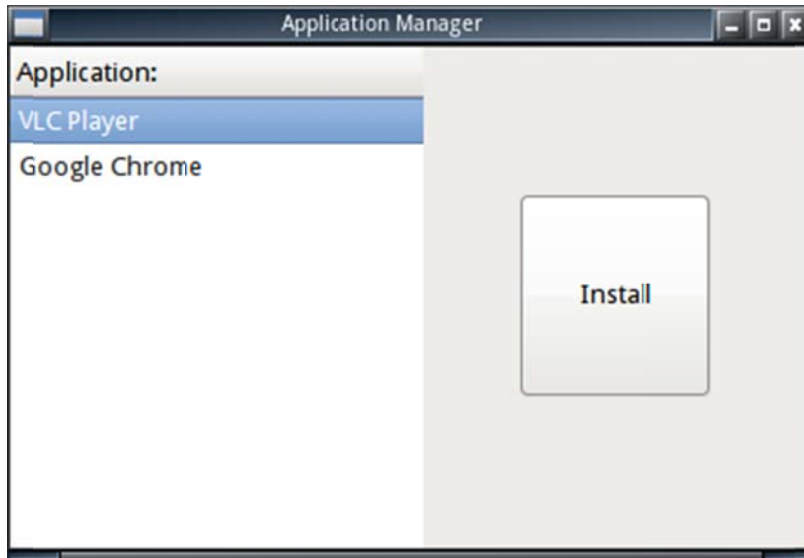
Once the Restore Defaults dialog box opens, simply click OK and all your installed applications and customized settings will go to their original settings.

NOTE:

All your system settings including but not limited to Wireless connection settings, Wired settings, language and keyboard selection, bookmarks and other browser preferences, Emails account settings and email archives, Power management settings.

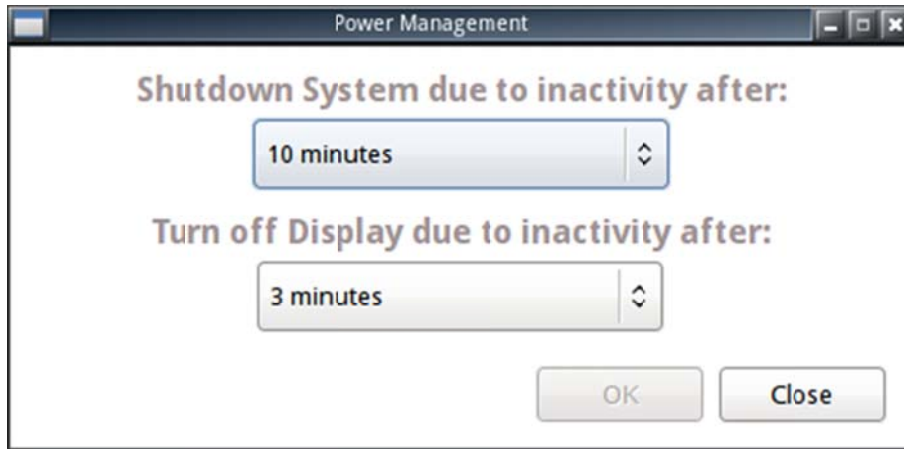
This will also uninstall VLC player and Google Chrome browser (if installed).

System: Application Manager



The Application Manager allows you to install applications. Simply select the application that you want to install from the list of available installable applications and click the Install button. Follow the instructions when the installation wizard begins. Typically you are required to agree to the license agreements and various terms before the installation can begin or finish. Make sure that your system is connected to the Internet. Many of the applications require an Internet connection to work properly.

System: Power Management



Power Management allows you to configure the system shutdown and display power down due to inactivity in order to conserve battery life. The settings for each are configurable in various time increments. Simply select a time that you want each event to occur and click OK.

NOTE:

If any application such as the browser, VLC player, Skype and so on is open, power management will not be enabled.

System: Preferred OS



This is a really nice feature. The Preferred OS dialog box allows you to select the operating system that the system boots up into without the need to press a special key or BIOS setup.

NOTE:

You also have the ability to boot directly into your main operating system from AMI VR-pulse by clicking on the shutdown icon and selecting your main operating system.

Index

A

Application, 1, 2, 11

B

Battery, 3

C

Control Panel, 3, 4

D

Date, 3, 8
Defaults, 10

F

Facebook, 2

G

Google Chrome, 2

L

Language, 5

M

Management, 12
Manager, 11
Mozilla Thunderbird, 2

N

Nautilus, 2
Network, 3, 6

O

operating system, 3, 7, 13

P

Pidgin, 2
Power, 12
Preferred OS, 13

R

Restore, 10

S

Shutdown, 3
Skype, 2
Sound, 9
Status, 3

T

Time, 3, 8
Twitter, 2

V

VLC, 2