

## ROBUST PRE-BOOT MANAGEMENT UTILITY

AMI Extensible Management Architecture (EMA) integrates firmware configuration and updates, hardware diagnostics and pre-OS applications in a Unified EFI (UEFI) environment. When combined with AMI's Aptio<sup>®</sup> UEFI firmware and AMIDiag<sup>™</sup> for UEFI diagnostics, AMI EMA greatly simplifies system maintenance and configuration.

**Embed Utilities With The System** – Replaces the “recovery DVD” with an always available pre-boot management tool. AMI EMA can be executed from the BIOS flash ROM, NAND flash, on-board USB devices, protected hard disk partitions and OEM proprietary storage.

**Powerful Pre-Boot GUI** – Move away from text-based applications to an intuitive graphical interface. AMI EMA presents a consistent interface to the user, with OEM branding via customizable themes.

**OS-Independent Firmware Updates** – Executing BIOS and firmware updates in pre-boot eliminates OS compatibility issues, and allows customers to recover in situations where the OS cannot boot.

**Simplify Pre-OS Configuration** – Provide a GUI alternative to the text based “legacy BIOS” setup menu by taking advantage of UEFI standards.

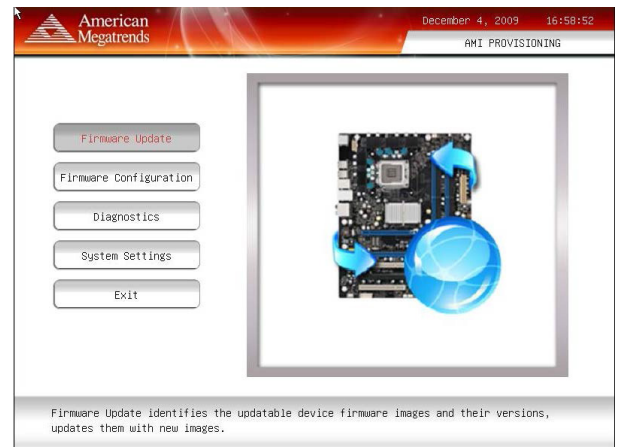
**Integrated Diagnostics** - Make system diagnostics readily available to the user. AMIDiag for UEFI integrates into the AMI EMA solution, enabling full system tests even when the OS is not functional. Avoid the cost of system returns due to trivial issues.

**Standards Based** – AMI EMA is built on the industry-backed UEFI specification, simplifying usage across multiple platforms and market segments. Users experience a consistent management interface on AMI's Aptio solution or other UEFI implementations.

**Easily Extensible** – Create a framework for integrating new applications that leverage the same GUI and customized OEM themes.

## HIGHLIGHTS:

- UEFI 2.x (IA32 & x64)
- Customized look and feel
- Multi language support
- Context Sensitive Help
- Network support (CIFS / NFS/ FTP/ HTTP)
- Verify digital signatures to avoid using “tampered” updates
- Firmware Update
  - Update all firmware components
  - Update from file, network share, HTTP or FTP
  - Verify authenticity of firmware images



**American  
Megatrends**

American Megatrends Inc. | [ami.com](http://ami.com)  
5555 Oakbrook Parkway, Bldg. 200  
Norcross, GA 30093 | 770.246.8600

For more information: <https://ami.com>