

## FACTORY UTILITIES

AMI provides a wealth of utilities to customize the BIOS without rebuilding the source. Some utilities are utilized directly on the system on the factory floor, others are utilized to modify or customize the BIOS binary image before production.

### **AMI FIRMWARE UPDATE (AFUDOS™, AFUWIN™, AFULNX™, AFUBSD™)**

AMI offers a number of Flash Utilities to update the system BIOS supporting the major operating environments: DOS, Windows®, Linux and BSD. As the DOS environment is still widely used in production, AFUDOS with command line interface provides a quick method to flash the BIOS without tedious, annoying parameters. The target board must be an AMIBIOS system.

AFULNX and AFUBSD have the same parameters and behavior as AFUDOS, while AFUWIN adds a GUI interface to the command line.

- Small executable file size
- Quick update
- Clear updating information and status
- Fully compatible with previous version

### **AMISCE™**

AMISCE is an abstract CMOS Editor utility with command line interface for MS DOS environment. Produces a script file that lists all the existing BIOS Setup Questions in the host, whether they actually show in BIOS Setup screens or not. This generated script file can be modified and used as input to change the BIOS setup current values.

- BIOS SETUP values can be edited under operation system by TEXT script file
- Display, save and restore current CMOS contents

### **AMICMOS™**

AMICMOS is a CMOS RAM contents processor with command line interface for MS DOS. It is used on the production line to produce the CMOS RAM image on the same production batch.

- Display CMOS RAM contents as table
- Save/Restore current CMOS RAM contents

### **AMIPWD™**

AMIPWD is a change ROM password utility with command line interface. It allows you to redefine ROM password without modifying the BIOS Code.

- Update password more quickly
- Supervisor and user password can be updated at once

OEMs can easily and rapidly flash the BIOS, post and change their logos, change BIOS strings, update series data, setup questions and more.

### AMI FIRMWARE UPDATE

- *BIOS Flash Utilities*

### AMISCE

- *CMOS Editor*

### AMICMOS

- *Display, Save, Restore CMOS RAM values*

### AMIPWD

- *Password Update*

### ROMSETUP

- *Emulates BIOS Setup from DOS for easy documentation*

### MMTOOL

- *GUI utility for manipulating the BIOS ROM image*

### CHANGE LOGO

- *GUI tool for customizing OEM Logo*

### AMIBCP

- *Powerful GUI utility to modify ROM image BIOS default values*

### DMIEDIT

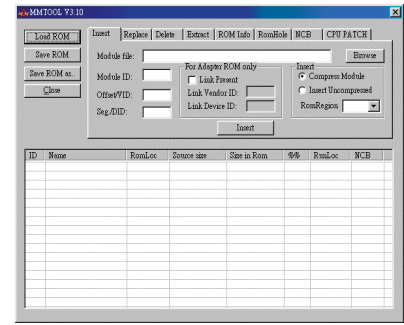
- *Modifies machine-specific info in the SMBIOS table*

# BIOS IMAGE UTILITIES

## MMTOOL™

MMTool allows to manipulate the BIOS image without a need to change source modules and rebuild the BIOS again. The user can manage the BIOS modules that are contained in the BIOS ROM file through an easy graphical user interface.

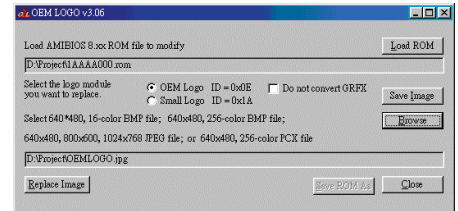
- Insert, Replace, Extract, Delete Module
- Display ROM Information
- Display/Change ROM Hole content
- Display NCB Information
- Edit CPU Micro Code Patches module



## CHANGELOGO™ (“OEM LOGO”)

Changelogo is a GUI tool for customizing the screen logo at startup. Allows to replace the OEM Logo (Large) and OEM Logo (Small) module inside the BIOS ROM file with a new one.

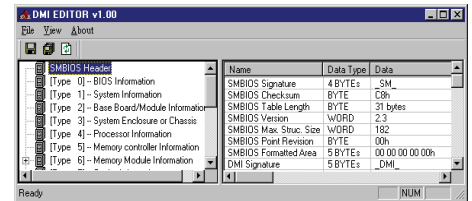
- Change OEM/small logo
- Remove OEM/small logo
- Check logo image format automatically to make sure it works with target BIOS



## DMIEDIT™

DMIEDIT enables processing of SMBIOS data on the current host system, utilizing an easy graphical interface. This utility can be used on the manufacturing line to:

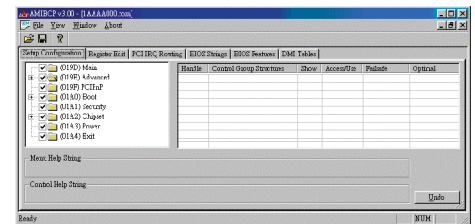
- Browse all SMBIOS information (non-AMIBIOS system support)
- Save SMBIOS information to file (non-AMIBIOS system support)
- Modify and Update SMBIOS information (AMIBIOS system only)



## AMIBCP™

American Megatrends BIOS Configuration Program provides an easy way to customize some of the AMIBIOS features without coding. This means that ODMs do not have to contact American Megatrends every time a minor change has to be made in the AMIBIOS code. AMIBCP enables OEMs to perform many actions:

- Configure the AMIBIOS System Setup
- Edit the Registers Tables
- Edit PCI IRQ Routing Table
- View AMIBIOS Features, CPU Microcode Patches, Edit Minor Version Number, Sign On message and OEM data
- View and Edit AMIBIOS String
- View and Modify AMIBIOS DMI Tables
- SETUP screen layout



For more information, visit [www.ami.com/amibios8](http://www.ami.com/amibios8)



American Megatrends Inc. | [ami.com](http://ami.com)  
 5555 Oakbrook Parkway, Bldg. 200  
 Norcross, GA 30093 | 770.246.8600

For more information: <https://ami.com/>