



AMIBCP for Aptio® V

AMI BIOS Configuration Program (AMIBCP) is a powerful customization utility that enables OEMs/ODMs to customize the Aptio® ROM image without intervening on the source code and rebuilding the BIOS. With AMIBCP, it is possible to obtain multiple ROM image flavors ready for production. AMIBCP supports x86, x64 and ARM architectures. AMI may generate a customized version of AMIBCP utility for customers' redistribution to their end users.

AMIBCP for Aptio® is an easy to use graphical tool supporting Microsoft® Windows® and Linux operating systems.

AMIBCP is utilized to modify several parameters:

- Configure Aptio® system setup
- Edit the register tables
- Edit the legacy PCI routing table
- View and edit Aptio® strings
- View and modify DMI/SMBIOS tables
- View and modify Boot Order

Some of these features may not be supported by the firmware to be edited, in which case the corresponding tab will not appear.

The AMIBCP setup configuration function allows to:

- Edit setup questions
- Show or hide setup screens and setup questions
- Modify access levels and usage
- Edit failsafe and optimal values.

The PCI IRQ routing tables tab allows you to view and modify the PCI IRQ routing table that is used by the BIOS.

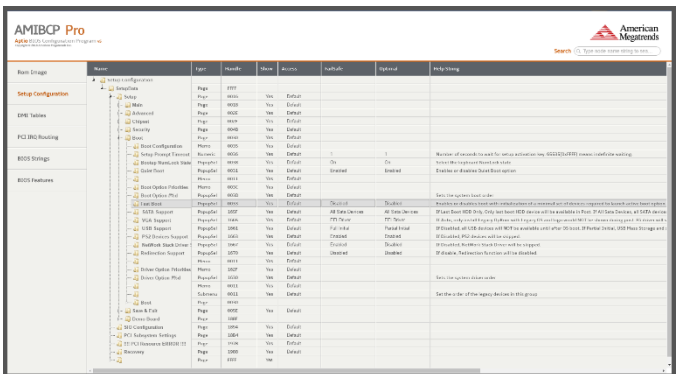
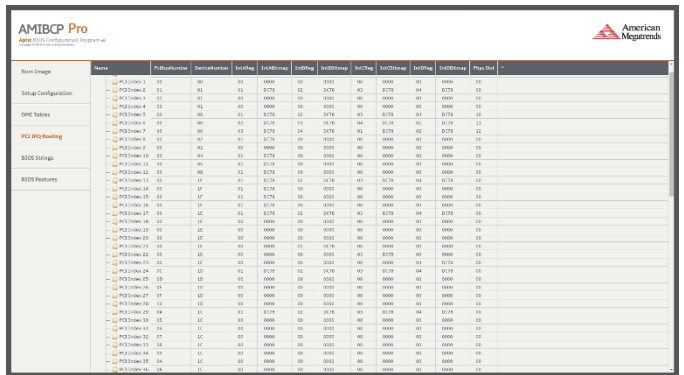
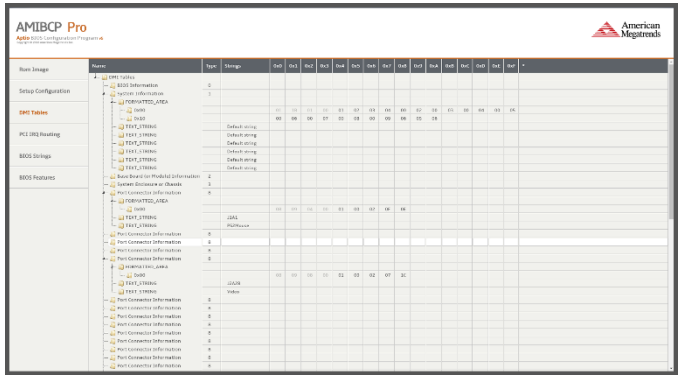
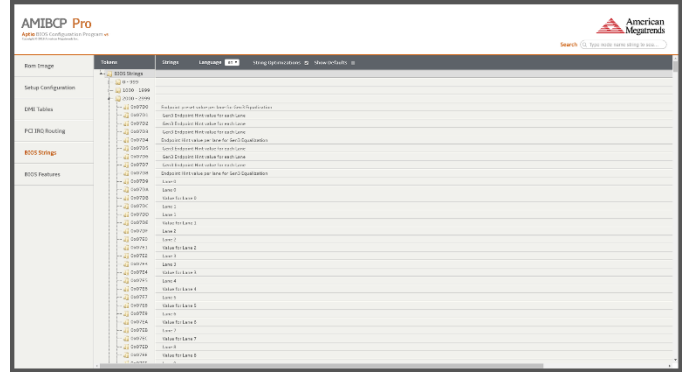
The BIOS Features tab allows you to view and configure some of the Aptio® features:

- BIOS date
- BIOS name
- Processor
- Major version
- ID string 1
- BIOS size
- BIOS tag
- Reference number
- Minor version
- CPU microcode update patches
- Sign on message
- OEM data (if available)

The BIOS Boot Order tab allows you to configure the boot order for the initial system boot.

The DMI tables tab allows you to view and modify the SMBIOS tables which include system information, firmware information, baseboard, and more.

The firmware image generated will have to be re-signed in order to be used with AFU, but may be flashed as is making use of a flash programmer.



For more information, please contact us at ami.com/contact

©2020 AMI. All rights reserved. Product specifications are subject to change without notice. Products mentioned herein may be trademarks or registered trademarks of their respective companies. No warranties are made, either expressed or implied, with regard to the contents of this work, its merchantability or fitness for a particular use. This publication contains proprietary information and is protected by copyright. AMI reserves the right to update, change and/or modify this product at any time.

