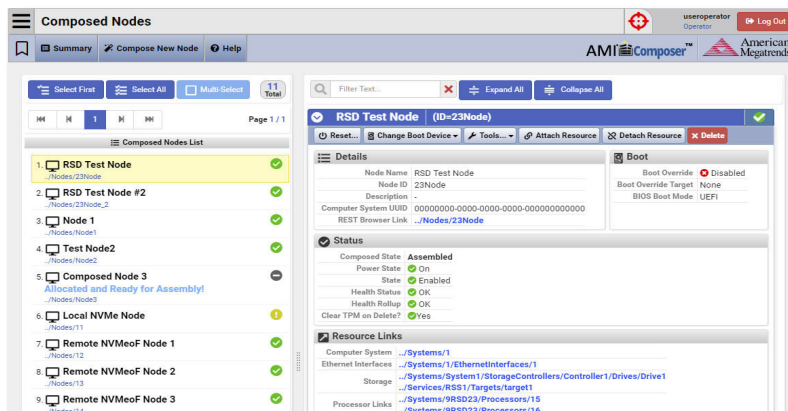


*Hyperscale pod management solution providing simplified physical configurations of compute, network and storage level resources*

Developed to be fully compliant with Intel® Rack Scale Design, AMI® Composer™ from American Megatrends is a pod management software solution that allows users to browse physical resources at the rack, chassis, and system level through an intuitive web-based user interface. Administrators can then assign and compose those physical resources to create a logical node, which provides the advantage of demand-driven dynamic scaling to optimize datacenter resource utilization. AMI Composer also allows for the composition of physical resources based on templates, which can then be stored and reused as a time-saving feature. In addition, AMI Composer gives users the ability to power on, force off, and gracefully shutdown composed nodes.

## BENEFITS

Developing with Intel® Rack Scale Design makes it possible to configure hardware to closely match the needs of the software. The AMI Composer interface simplifies the process of configuring hardware workflows by presenting a visual representation of the available hardware. AMI Composer also sends alerts to the operator when it detects poor resource allocation, based on usage and slowdowns. It can also offer alternate recommendations for the allocation of resources.



*Composed Nodes Summary View: Displays key information for pools of compute, memory, and storage resources across each composed node, as well as power state*

**KEY CAPABILITIES:**  
Power | Fault | Discover | Boot  
Configuration | Telemetry

## HIGHLIGHTS

### Main Features

- Compliant with Intel® Rack Scale Design
- WebUI dashboard for hierarchal view
- Logical node composition based on payload templates
- Node provisioning through PXE server
- Power operations
- Restore composed node resources on PSME power cycle

### WebUI Dashboard

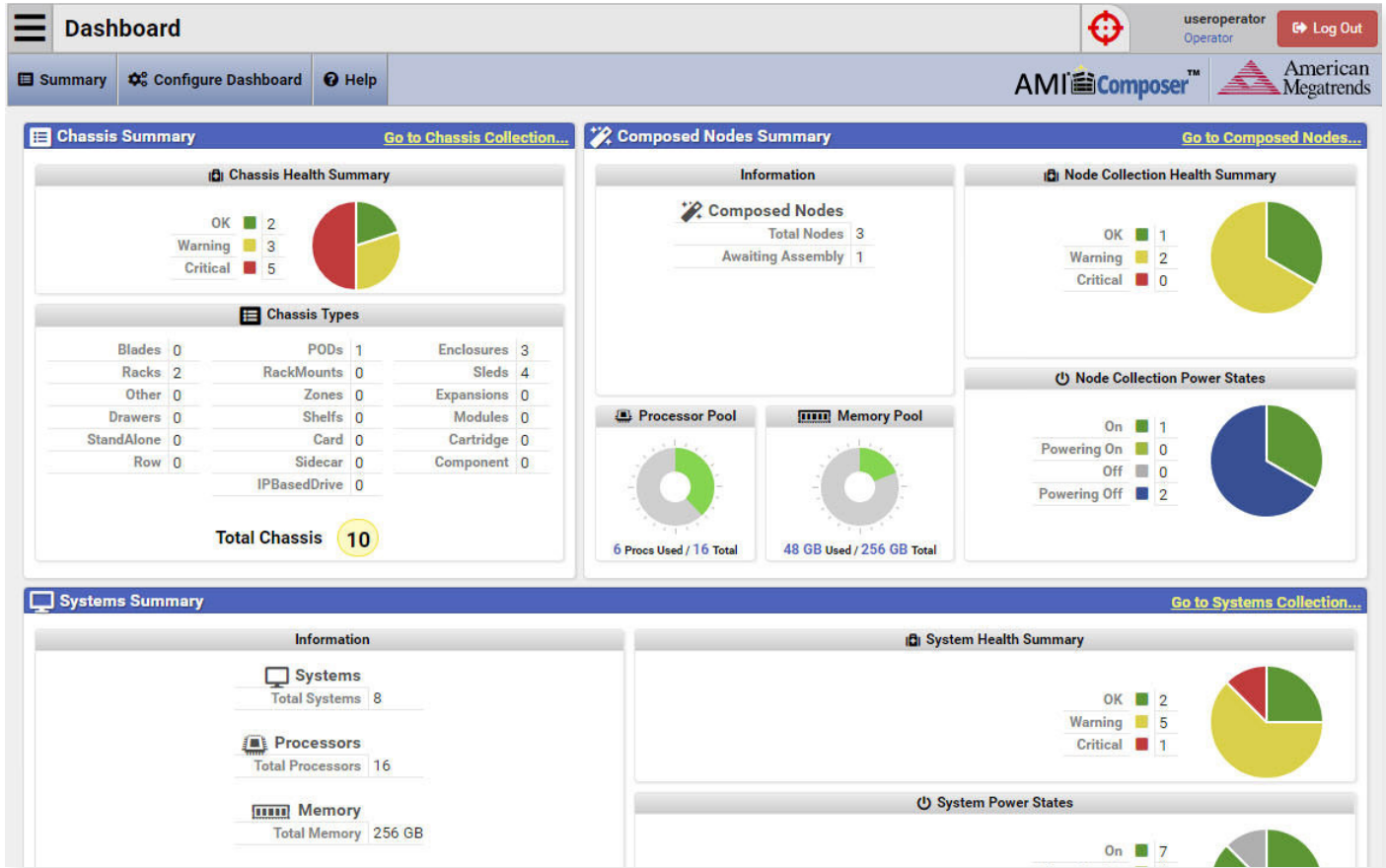
- Composed nodes summary
- Chassis collection summary
- Systems summary
- Critical alerts
- Critical events

### Provisioning Process

- Physical resource allocation
- Logical node assembly
- Node provisioning

# The AMI Composer Dashboard

The main dashboard displays the initial hierarchal overview of the rack, chassis and system resources



## SYSTEM REQUIRED SERVICES

### PREREQUISITES INCLUDE:

- Ubuntu Server (or similar validated OS)
- Internet access for server
- Drawer computer system
- External host attached to storage network of rack
- Storage service setup configuration
- DHCP server configuration
- iPXE open source network boot firmware compilation/ installation
- 32 GB HDD/SSD minimum storage
- Custom certificates can be configured for secure HTTPS

For more information:  
<https://ami.com/ami-composer/>



American Megatrends International LLC | ami.com  
 5555 Oakbrook Parkway, Bldg. 200  
 Norcross GA 30093 | 770.246.8600